

# RUSSLEY PORTABLES

LTD

DESIGNED TO YOUR NEEDS

[www.russleyportables.co.nz](http://www.russleyportables.co.nz)



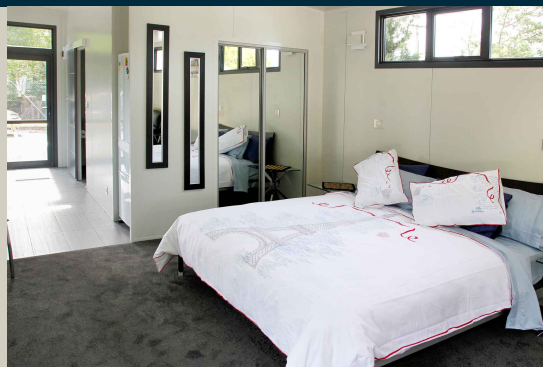
Make a smarter more energy wise choice.

## 12 metre multi-purpose accommodation unit

Very competitively priced – low energy costs and maintenance.  
Transportable to your own site. Ideal as a Granny Flat in your back yard.

### Perfect for many useful applications:

- Farm Cottages
- Seasonal work cottage
- Studio Motel units
- Tourist Flats
- Private baches
- Over 60's Flats
- Tourist Home Stays
- Reception office
- Administration unit
- Investment rentals
- Temporary or permanent accommodation solutions







Russley Portable Buildings are delivered to your site ready to use. We can take care of connection to electricity, plumbing, drainage, heating and air conditioning, plus phone and internet connection.

**Russley Portable units are fully insulated and Double Glazed. They are designed for efficient, low energy living.**



*Foundation cost savings with light weight construction*

**Russley Portables** offer quicker, smarter, accommodation solutions. Fully transportable, they set up on your site quickly.

**The affordable option.** Big energy savings with the energy efficient materials. Low maintenance costs. The lightweight construction offers large foundation cost savings. The perfect solution for regular or challenging sites.

**Flexible interior layouts.** Many design options possible. All the panels are manufactured here in Canterbury.

**Russley Portables can arrange:** Council consents, on site works, foundations and transport.

**Rent or buy.** Manage your financial commitment as your needs change. Purchase a unit or ask about rental options.

**Dimensions:** 12m x 4.5m + soffit overhang.



Contact us now for this multi-purpose accommodation solution.



*Sales contacts:*

**Russley Portables 03 357 2950**

Office and Construction: 656 Wairakei Road Christchurch New Zealand.  
www.russleyportables.co.nz